



Madison Parks Division

210 Martin Luther King, Jr. Blvd., Room 104
Madison, WI 53703
608-266-4711 • cityofmadison.com/parks



June 21, 2018

NOTICE OF ADDENDUM ADDENDUM 1

CONTRACT NO. 8228

Revise and amend the contract document(s) for the above project as stated in this addendum, otherwise, the original document shall remain in effect.

SPECIAL PROVISIONS:

No change

PROPOSAL:

Add BID ITEM 20130 - UNDERDRAIN. BID ITEM 20130 is listed, below and has been added to Section B: Proposal Page on BidExpress.

20130	UNDERDRAIN	241.0	LF		\$	-
-------	------------	-------	----	--	----	---

PLAN SET:

Remove and replace Sheet 1.8, Poured-In-Place Playground Surfacing With Underdrain.

CLARIFICATION:

Underdrain bid item was not included in the proposal page and is required.

Electronic version of these documents can be found on the Bid Express web site at:

<http://www.bidexpress.com>

If you are unable to download plan revisions associated with the addendum, please contact the Engineering office at 608-266-4751 receive the material by another route.


for Eric Knepp, Parks Superintendent

PROJECT:
*2018 ELVER
 PARK INCLUSIVE
 PLAYGROUND*

Although every effort has been made in preparing these plans and checking them for accuracy, the contractor and subcontractors must check all details and dimensions of their trade and be responsible for the same.

ITEM	DATE
REVISED: KK	06-20-2018
Drawn by: KK	04-19-2018

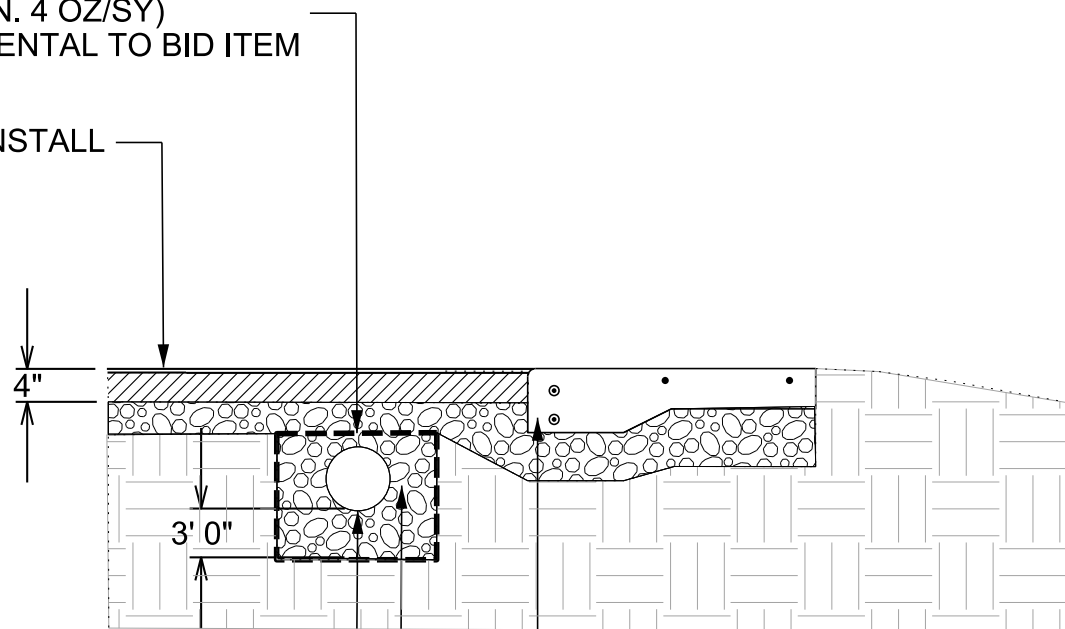
PUBLIC WORKS PROJECT #:
8228

SHEET TITLE:
*POURED-IN-PLACE
 PLAYGROUND SURFACING
 WITH UNDERDRAIN*

SHEET NUMBER:
1.8

GEOTEXTILE FABRIC TYPE SAS NON WOVEN (MIN. 4 OZ/SY)
 GEOTEXTILE FABRIC TO WRAP TRENCH IS INCIDENTAL TO BID ITEM 20301

POURED-IN-PLACE PLAYGROUND SURFACING; INSTALL PER MANUFACTURER'S INSTALLATION INSTRUCTIONS



4 INCH PERFORATED PVC DRAIN PIPE PITCHED MINIMUM OF 0.5% SLOPE

OPEN GRADED BASE COURSE WI DOT GRADATION NO. 2 AS SPECIFIED IN SECTION 501.2.5.4.4 OF WI DOT STANDARD SPECIFICATIONS

PROPOSED CONCRETE BORDER SEE DETAIL 2, SHEET 1.7